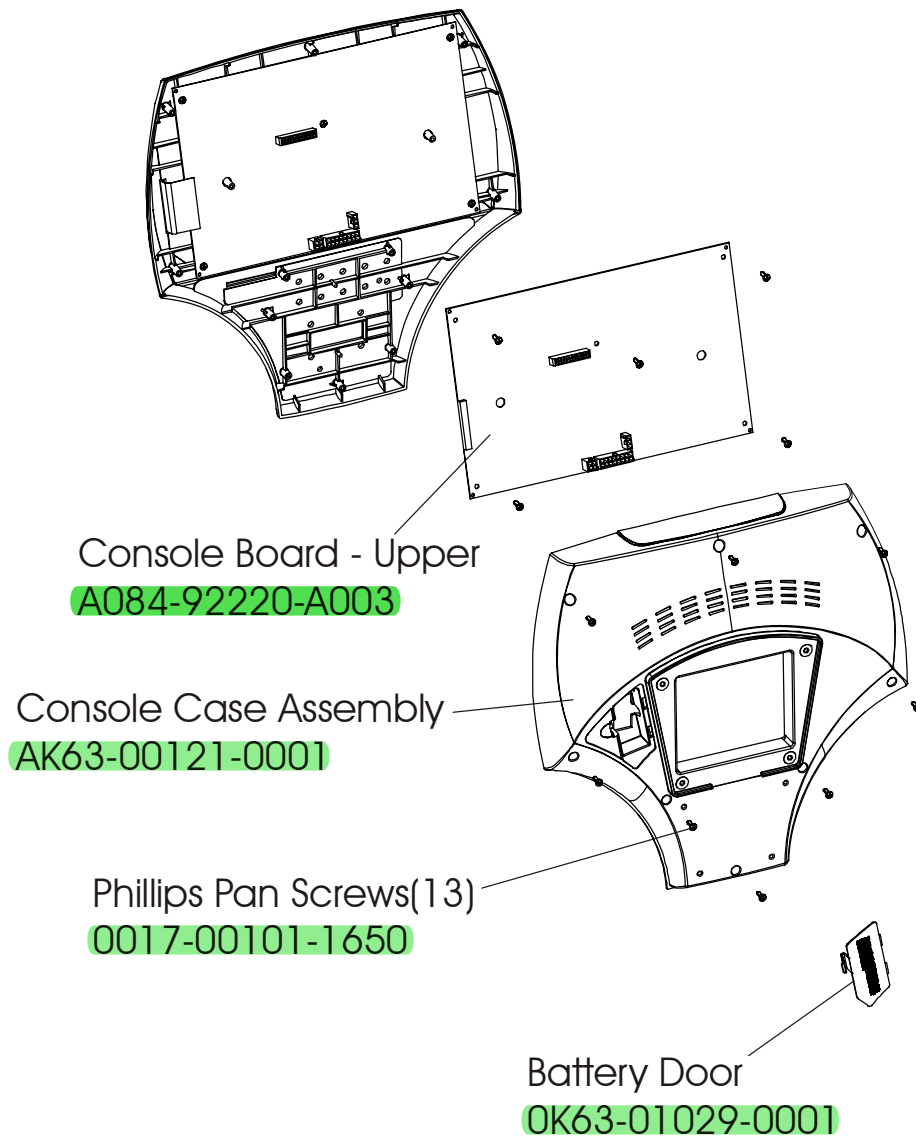


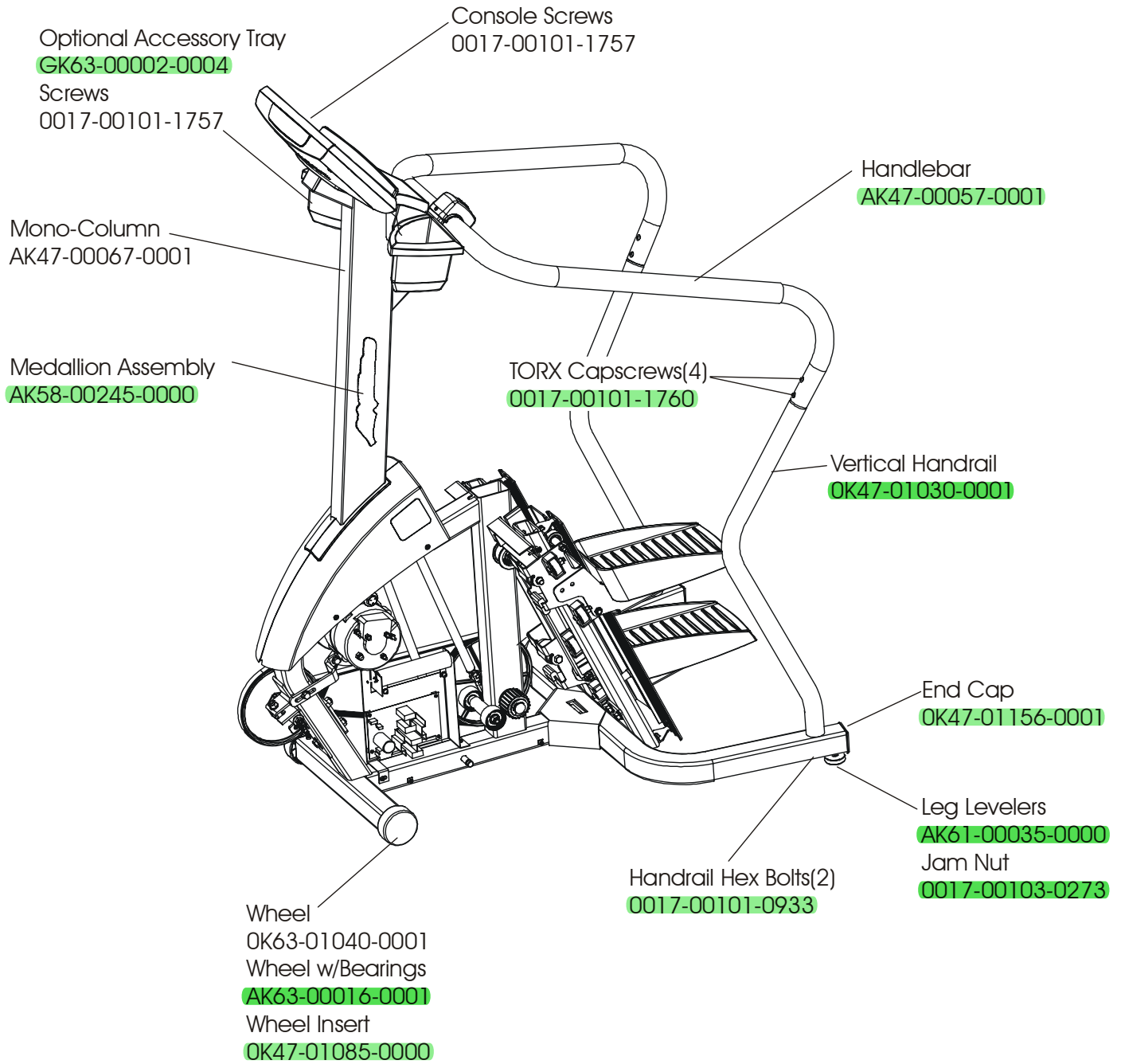
Description	Part Number
Service Manual	M051-00K47-A013
Operation Manual, Eng	M051-00K47-A033
Hardware Bag	AK47-00108-0000



Console Assembly	Overlay/Bezel/Switch Assy
AK47-00096-0001 Eng Met	AK47-00100-0001 Eng Met
AK47-00096-0003 Ger Met	AK47-00100-0003 Ger Met
AK47-00096-0004 Spn Met	AK47-00100-0004 Spn Met
AK47-00096-0006 Jap Met	AK47-00100-0006 Jap Met
AK47-00096-0007 Frn Met	AK47-00100-0007 Frn Met
AK47-00096-0008 Itl Met	AK47-00100-0008 Itl Met
AK47-00096-0009 Dut Met	AK47-00100-0009 Dut Met
AK47-00096-0010 Por Met	AK47-00100-0010 Por Met

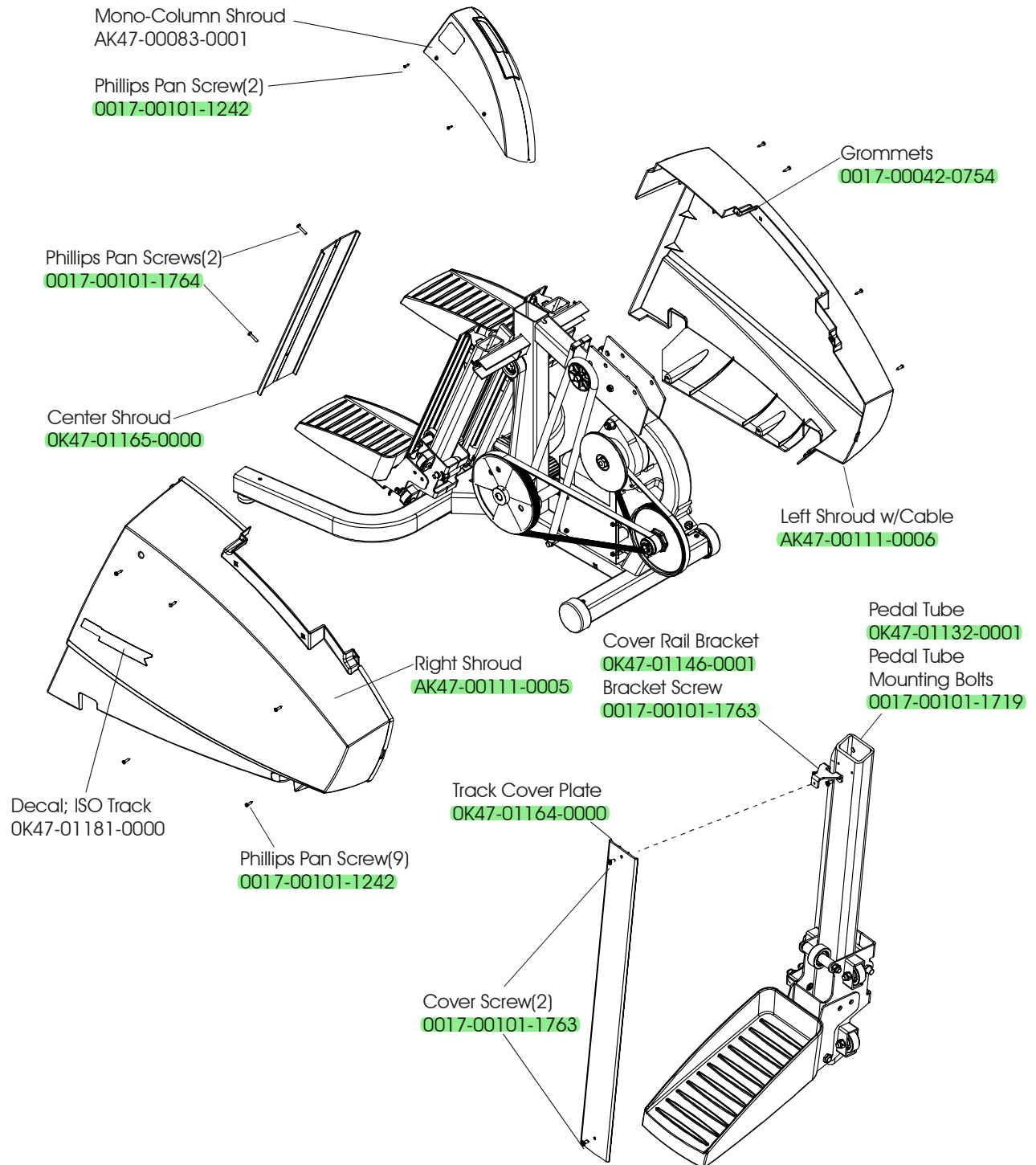
Stepper 90S
Frame Assembly

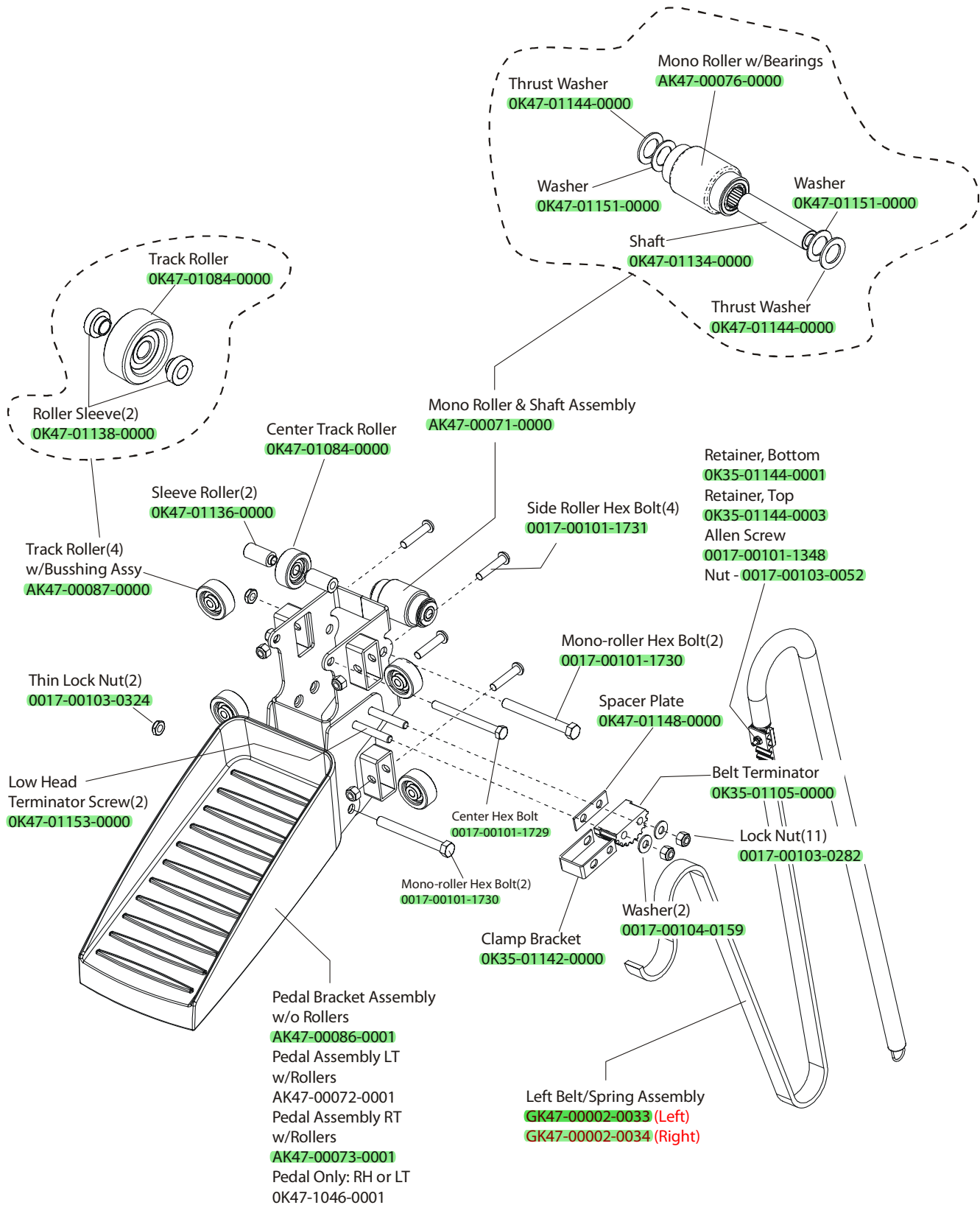
90S-XXXX-01
S/N SCA100000

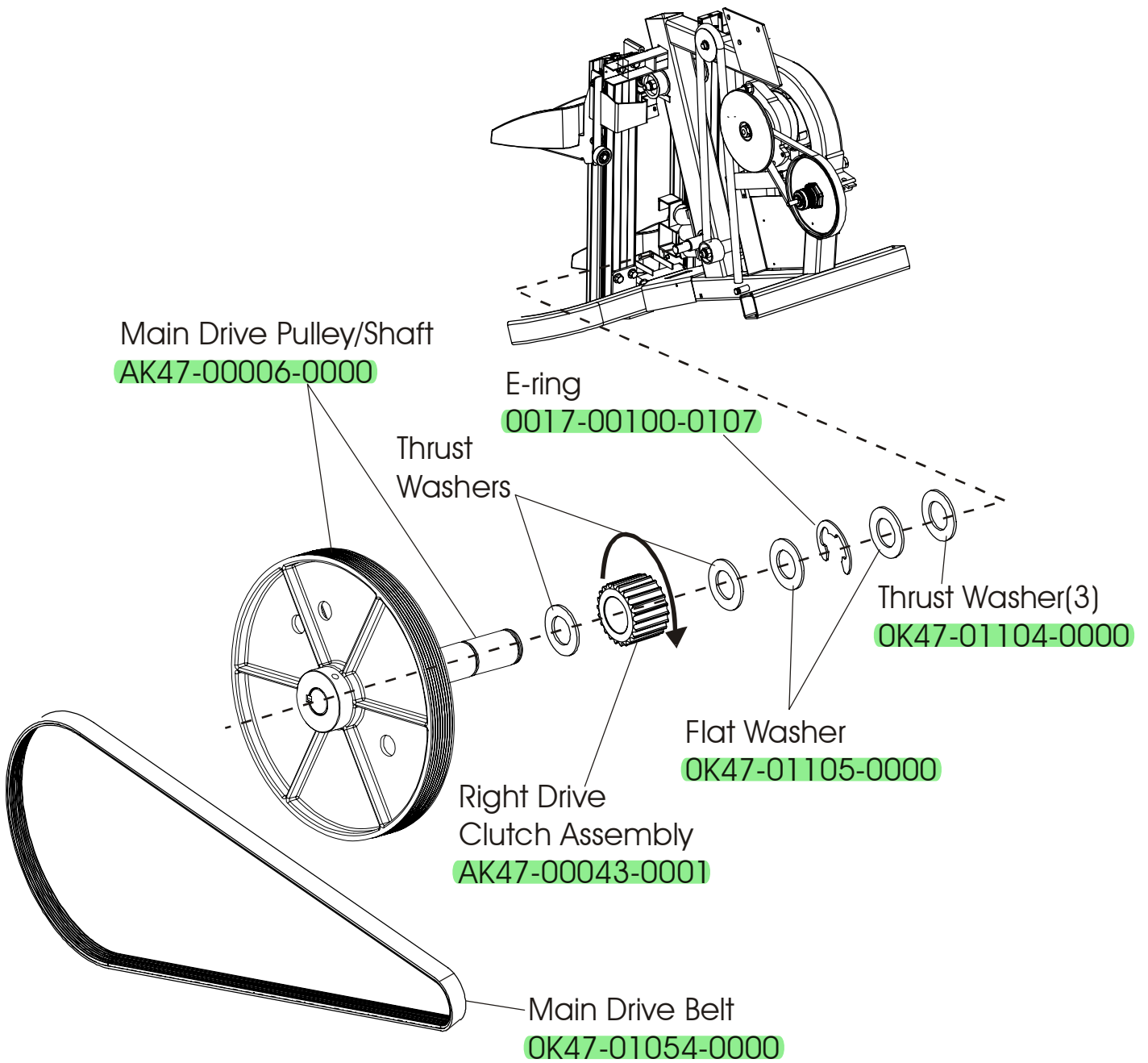


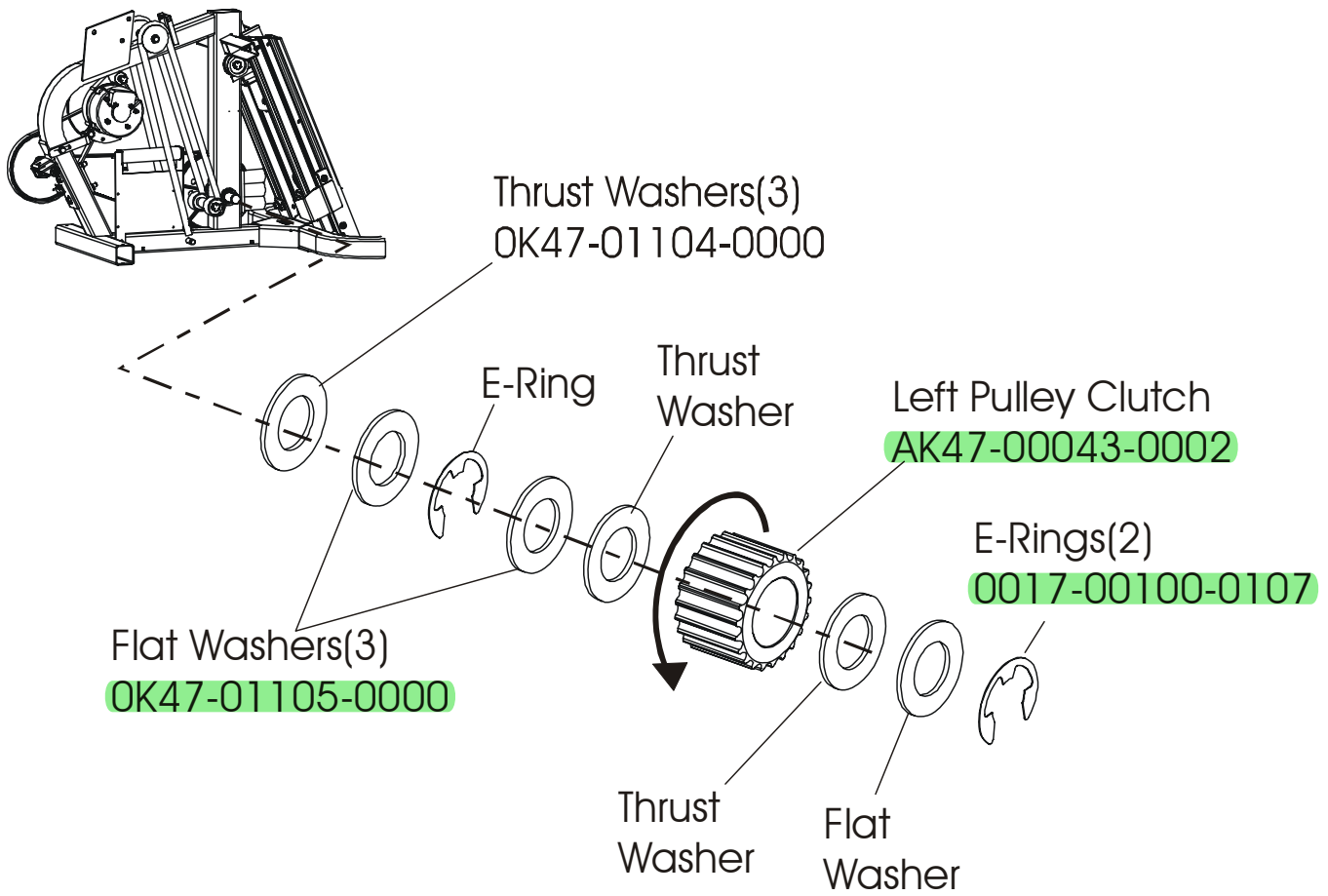
Stepper 90S Shrouds & Pedal Tube

90S-XXXX-01
S/N SCA100000



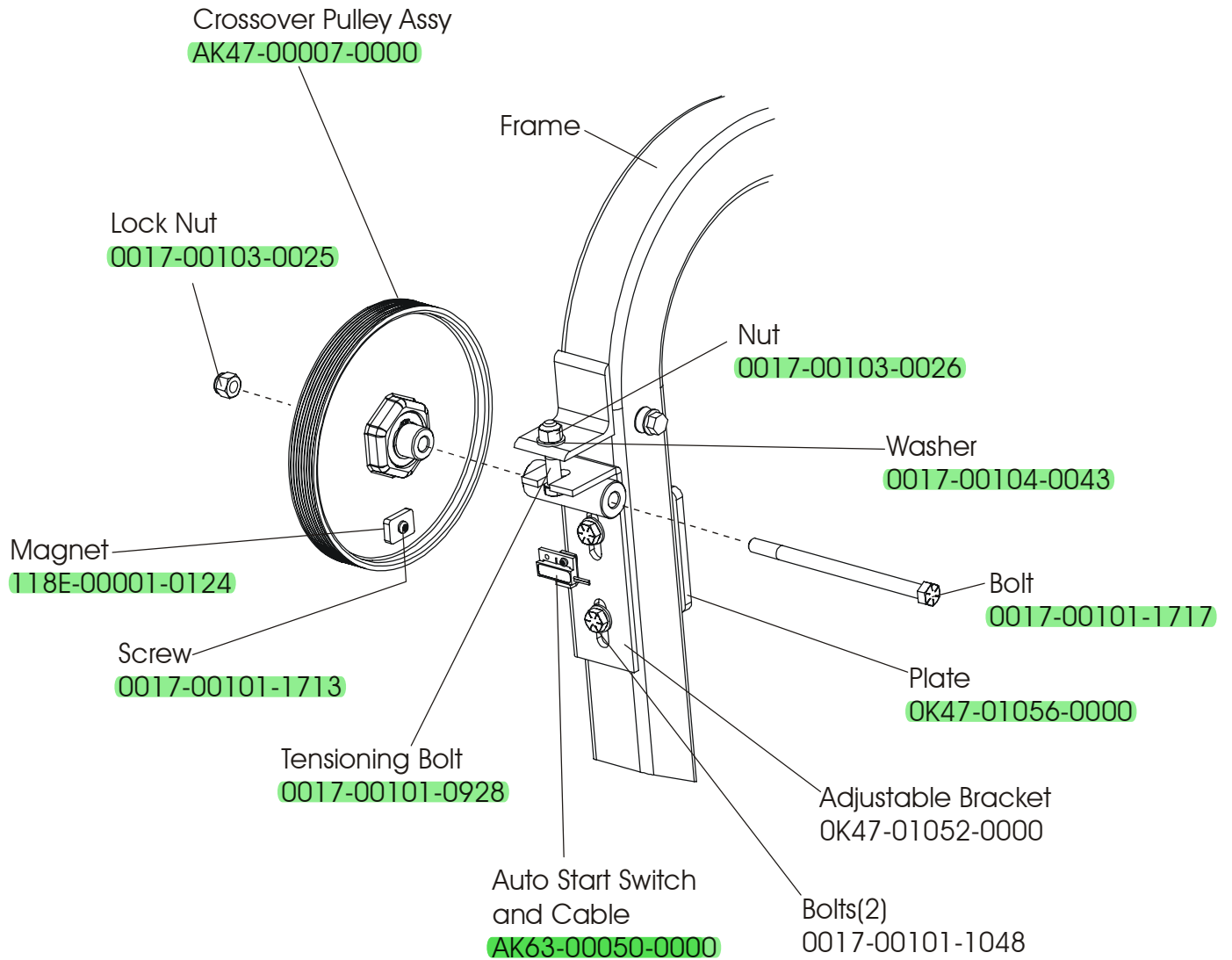


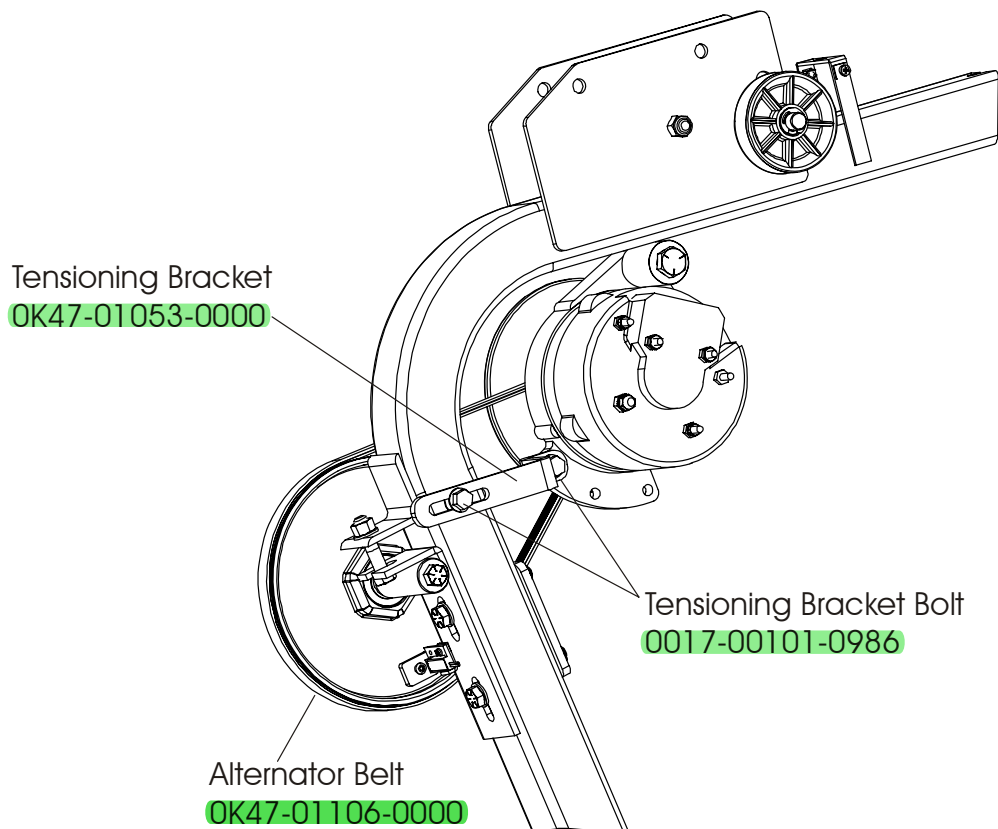
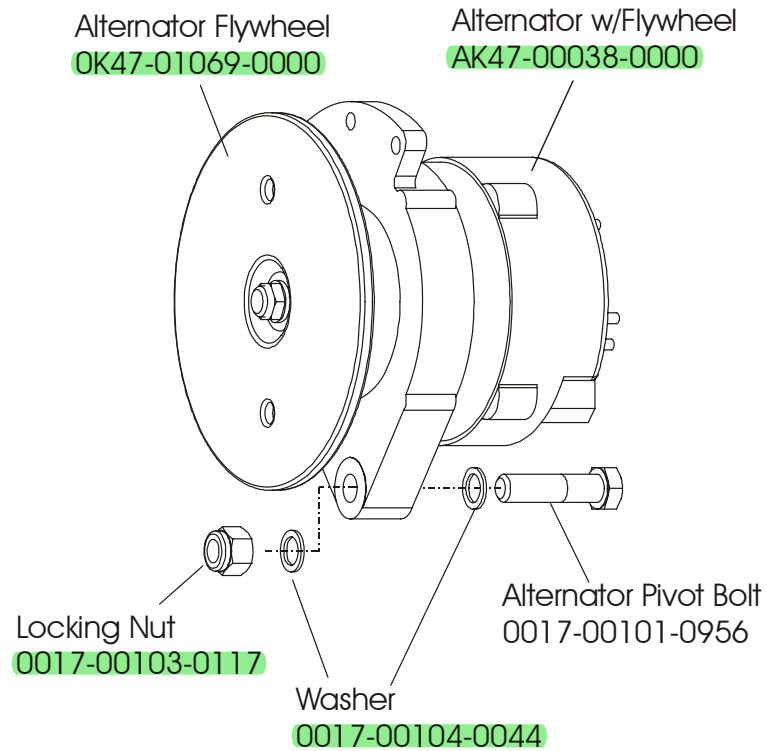


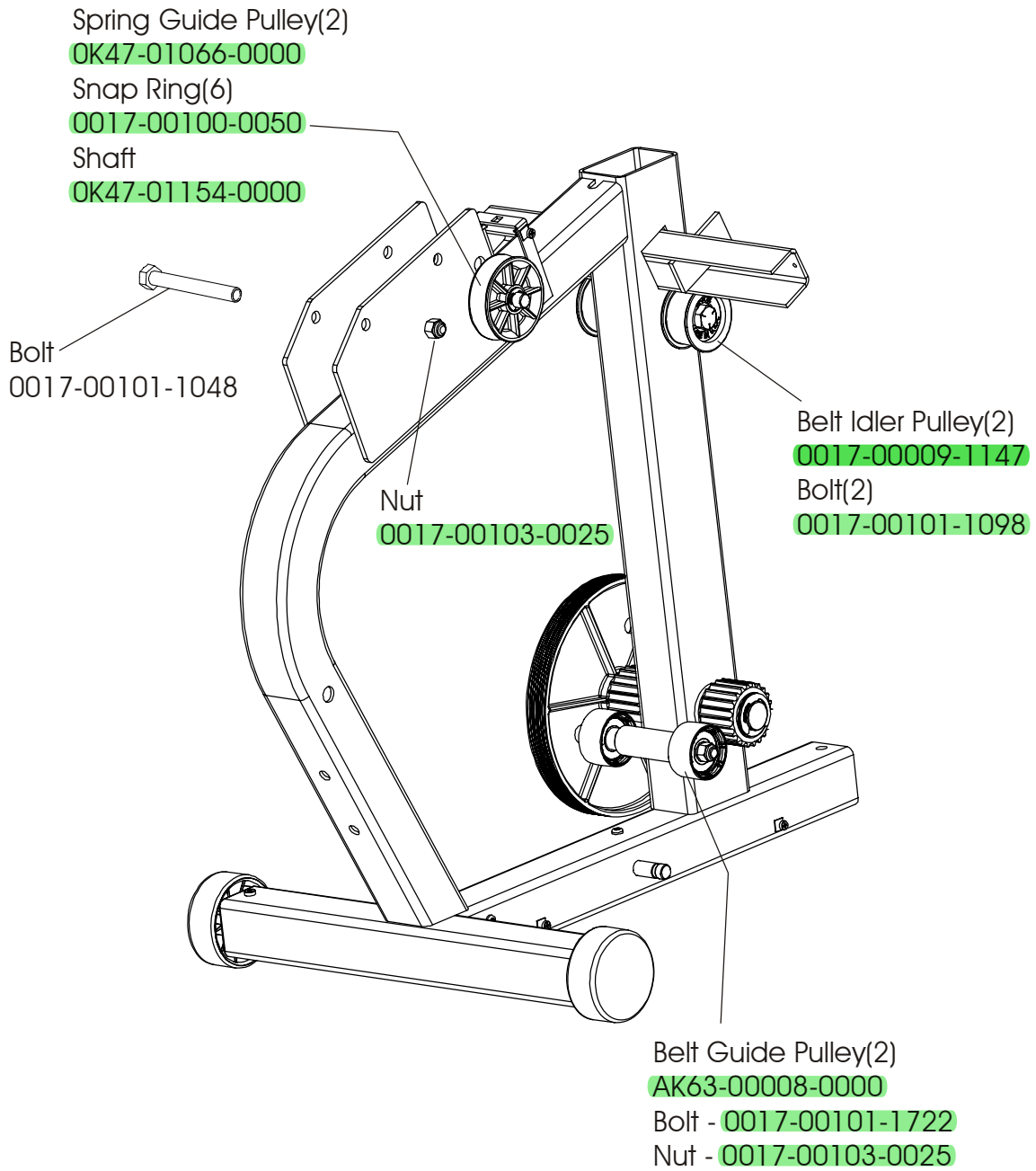


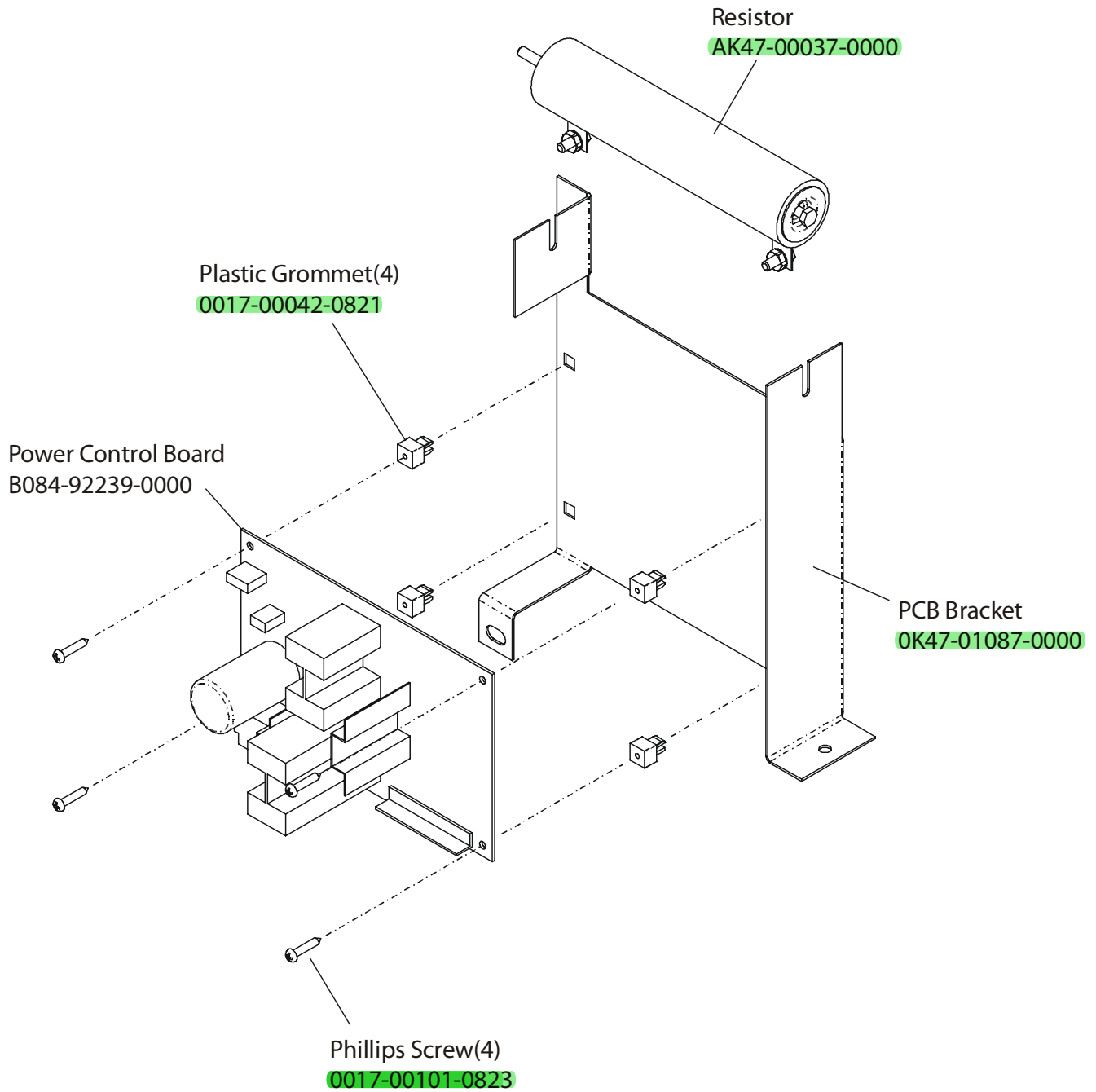
Stepper 90S
Crossover Pulley Assembly

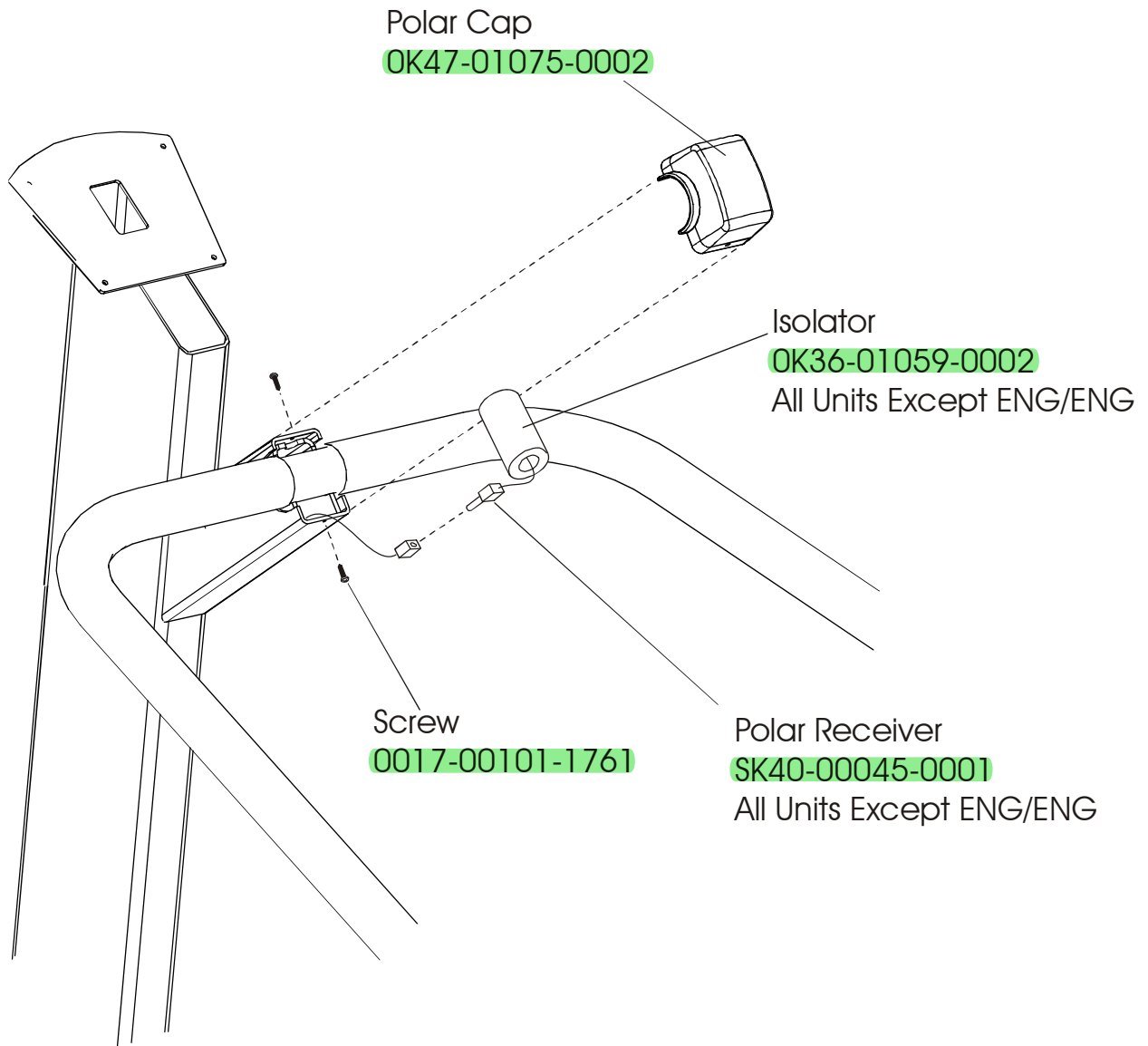
90S-XXXX-01
S/N SCA100000

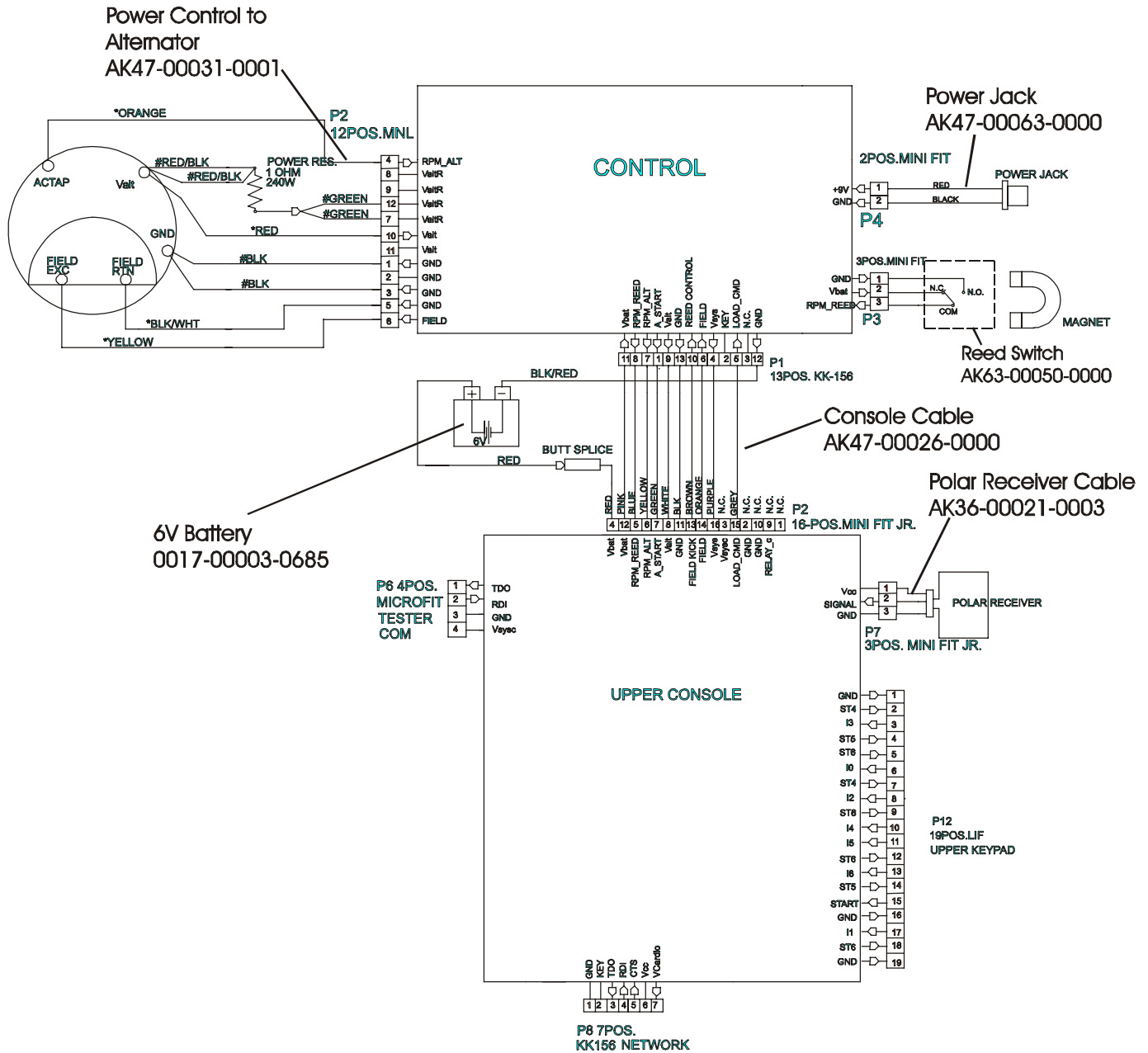












Description	Part Number
Domestic 120/60 Battery Charge w/Cord	118E-00001-0148
Universal Battery Charger w/o Line Cord	118E-00001-0147
Line Cord 220V/60Hz	0017-00003-0704
Line Cord 100V/50Hz	
Line Cord 240+	0017-00003-0918
Line Cord 220V/50Hz	0017-00003-0691
Line Cord 200V/50Hz	
Line Cord 230V/50Hz	